

Serie Lucciola	Serie Canova	Serie Halled	Serie Hyperion						Serie Cyclorama
30W Pinspot	30W Pinspot, Profile	85W Downlight	100W Fresnel, PC, Profile	200W Fresnel, PC, Profile	300W Fresnel, PC, Profile	300W Followspot	700W Fresnel, PC, Profile	700W Followspot	600W Cyclorama

#### SOURCE

- **600W (96 LED)**
- For **LUMINOUS FLUX** and **COLOR RENDERING INDEX (CRI)** refer to the related table

RGBA	Luminous flux	Colour rendering		
		CRI	TLCI	TM-30
8 FULL COLOUR				

#### HOUSING

- Highly resistant body in **extruded aluminum**
- **IP 20**
- Finishing: **black**

#### ELECTRICAL

- Power consumption: 600 W
- Power supply: 100-240 V – 50/60 Hz
- PF>0.94/230VAC PF>0.98/115VAC at full load

#### THERMAL MANAGEMENT

- Wide ventilation slots for better LED cooling with 3 selectable FAN MODE
- High efficiency cooling system
- Ta max 40°C

#### CONNECTION

- Power connector: chassis PowerCON TRUE1 In/Out
- Additional cable: 2m H05RN-F cable with powerCON TRUE1 female cable connector
- DMX: XLR 5-pole In/Out panel connectors

#### OPTICS

- **High-quality polycarbonate lens**

#### COMPLIANCE

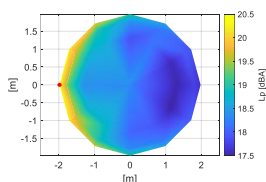
- CE
- EN 60598-1; EN 60598-2-17
- SSL Licensing Program
- Manufactured in Italy with Quality System ISO 9001:2015

#### NOISE LEVEL DATA (silent mode)

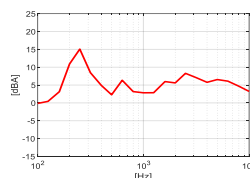
Conditions during measurements:

- Test in hemi-anechoic room
- Temperature: 22°C
- Relative humidity: 79%
- Radius of spherical measuring surface: 2m

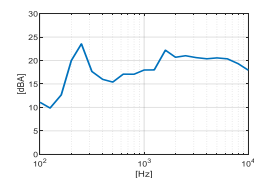
Diagram of Sound Pressure level  $L_p$  [dBA], the red point identifies the direction of maximum noise emission <sup>1</sup>



Sound pressure level spectrum [dBA] measured at maximum noise emission point



Sound power level spectrum  $L_{WA}$  [dBA]



Total sound pressure level  $L_p$  (0.1 – 10 kHz, ref.  $2 \times 10^{-5}$  Pa) at different distances<sup>2</sup>:

Distance	1 m	2 m	4 m	6 m
Sound pressure level $L_p$	23.1 dBA	17.1 dBA	11.1 dBA	7.6 dBA

The total sound power level  $L_{WA}$  is equal to **30.2 dBA** (0.1 – 10 kHz, ref.  $1 \times 10^{-12}$  W).

#### SOFTWARE FUNCTIONS

- **ESD**: 8bit or 16bit
- Up to 6 **DIMMING CURVE**
- **LED DELAY**: from 0 to 2000ms
- **AMBER SHIFT**, in combination whit HALO dimming curve and LED delay, in order to emulate the performances of a halogen lamp
- PWM LED 500Hz-20KHz
- **± GREEN** in order to guarantee a fine adjustment of green component of CCT
- **OUTPUT FREQUENCY** in order to remove flickering
- **LED BOOST** in order to increase +20% the light output of a fixture when for a tint or CCT when not all LED channels are at full
- **FAN MODE**: selectable from fixture (AUTO, STANDARD, SILENT) or remote from DMX
- **LED CALIBRATION** in order to adjust the tints of a group of fixtures when/if they aren't aligned, despite being set with the same DMX values
- **SERVICE CHANNEL** in order to control all the settings that are normally set from the fixture by using a console
- **STAND-ALONE** and **MASTER AND SLAVE** in order to control one or more fixtures without using a console, creating one or multi scenes
- **DISPLAY ROTATION** and **DISPLAY ON/OFF**
- **BOARD TEMPERATURE** and **CHIP TEMPERATURE** in order to monitor how the fixture works
- **WIRELESS DMX** ready
- Hour-counter on single LED
- Storage and factory recovery
- Upgradable firmware via DMX/USB tool
- Advanced remote settings (**RDM**) for all parameters via DMX
- **ERROR LIST** in order to display errors that can occur

#### COLOR and CCT PRESETS

- Manual control
  - o MANUAL PRESET: CCT (9) + LEE FILTERS (66) + custom (10)
  - o MANUAL COLOUR: LEE filters (66) + custom (19)
  - o MANUAL CCT: CCT (36)
- DMX control:
  - o LEE FILTERS channel: standard (241) + custom (14)
  - o ROSCO FILTERS channel: standard (236) + custom (19)
  - o CCT channel: TW (2700-6500K) / 6C/8C (1500-20000K)

#### DIMENSIONS

Cyclorama	15.0 Kg	230x500x140 mm
-----------	---------	----------------

<sup>1</sup>The positive direction of X axis corresponds to the spotlight central axis and points in the direction of light emission.

<sup>2</sup>Estimated Sound Pressure levels starting from the one measured at the point of maximum noise emissions at 2 m.

Serie Lucciola	Serie Canova	Serie Halled	Serie Hyperion					Serie Cyclorama	
30W Pinspot	30W Pinspot, Profile	85W Downlight	100W Fresnel, PC, Profile	200W Fresnel, PC, Profile	300W Fresnel, PC, Profile	300W Followspot	700W Fresnel, PC, Profile	700W Followspot	600W Cyclorama

## DMX PERSONALITIES

	RGBA					
	EASY	HSIC	RGBA	RGBA	THEATER	STUDIO
	8 BIT	8 BIT	8 BIT	16 BIT	16 BIT	16 BIT
1 ch	DIMMER	DIMMER	DIMMER	DIMMER	DIMMER	DIMMER
2 ch	ROSCO FILTERS	HUE	RED	DIMMER FINE	DIMMER FINE	DIMMER FINE
3 ch	LEE FILTERS	HUE FINE	GREEN	RED	RED	RED
4 ch	CCT PRESET	SATURATION	BLUE	RED FINE	RED FINE	RED FINE
5 ch		CCT LINEAR	AMBER	GREEN	GREEN	GREEN
6 ch		STROBO+STORE	STROBO+STORE	GREEN FINE	GREEN FINE	GREEN FINE
7 ch		SERVICE	SERVICE	BLUE	BLUE	BLUE
8 ch				BLUE FINE	BLUE FINE	BLUE FINE
9 ch				AMBER	AMBER	AMBER
10 ch				AMBER FINE	AMBER FINE	AMBER FINE
11 ch					ROSCO FILTERS	ROSCO FILTERS
12 ch					LEE FILTERS	LEE FILTERS
13 ch					SATURATION	CCT STEPS
14 ch					CCT LINEAR	GREEN +/-
15 ch					GREEN +/-	DELAY
16 ch					DELAY	FAN
17 ch					FAN	STROBE+STORE
18 ch					STROBO+STORE	SERVICE
19 ch					SERVICE	FREE 1
20 ch					FREE 1	FREE 2
21 ch					FREE 2	

	8 FULL COLOUR					
	EASY	HSIC	8FC	8FC	THEATER	STUDIO
	8 BIT	8 BIT	8 BIT	16 BIT	16 BIT	16 BIT
1 ch	DIMMER	DIMMER	DIMMER	DIMMER	DIMMER	DIMMER
2 ch	ROSCO FILTERS	HUE	RED	DIMMER FINE	DIMMER FINE	DIMMER FINE
3 ch	LEE FILTERS	HUE FINE	GREEN	RED	RED	RED
4 ch	CCT PRESET	SATURATION	BLUE	RED FINE	RED FINE	RED FINE
5 ch		CCT LINEAR	AMBER	GREEN	GREEN	GREEN
6 ch		STROBO+STORE	CYAN	GREEN FINE	GREEN FINE	GREEN FINE
7 ch		SERVICE	LIME	BLUE	BLUE	BLUE
8 ch			DARK RED	BLUE FINE	BLUE FINE	BLUE FINE
9 ch			DARK BLU	AMBER	AMBER	AMBER
10 ch			MINT	AMBER FINE	AMBER FINE	AMBER FINE
11 ch			STROBO+STORE	CYAN	CYAN	CYAN
12 ch			SERVICE	CYAN FINE	CYAN FINE	CYAN FINE
13 ch				LIME	LIME	LIME
14 ch				LIME FINE	LIME FINE	LIME FINE
15 ch				DARK RED	DARK RED	DARK RED
16 ch				DARK RED FINE	DARK RED FINE	DARK RED FINE
17 ch				DARK BLU	DARK BLU	DARK BLU
18 ch				DARK BLU FINE	DARK BLU FINE	DARK BLU FINE
19 ch				MINT	MINT	MINT
20 ch				MINT FINE	MINT FINE	MINT FINE
21 ch					ROSCO FILTERS	ROSCO FILTERS
22 ch					LEE FILTERS	LEE FILTERS
23 ch					SATURATION	CCT STEPS
24 ch					CCT LINEAR	GREEN +/-
25 ch					GREEN +/-	DELAY
26 ch					DELAY	FAN
27 ch					FAN	STROBE+STORE
28 ch					STROBO+STORE	SERVICE
29 ch					SERVICE	FREE 1
30 ch					FREE 1	FREE 2
31 ch					FREE 2	

### What is in the box

- Fixture
- 2m H05RN-F cable with powerCON TRUE1 female cable connector
- Safety instructions

### Accessories

#### FIXTURE

- Not applicable

#### MOVEMENT SYSTEM (more info [here](#))

- Pole Operated, 2-way Pan and Tilt **PO/2 CYC600**